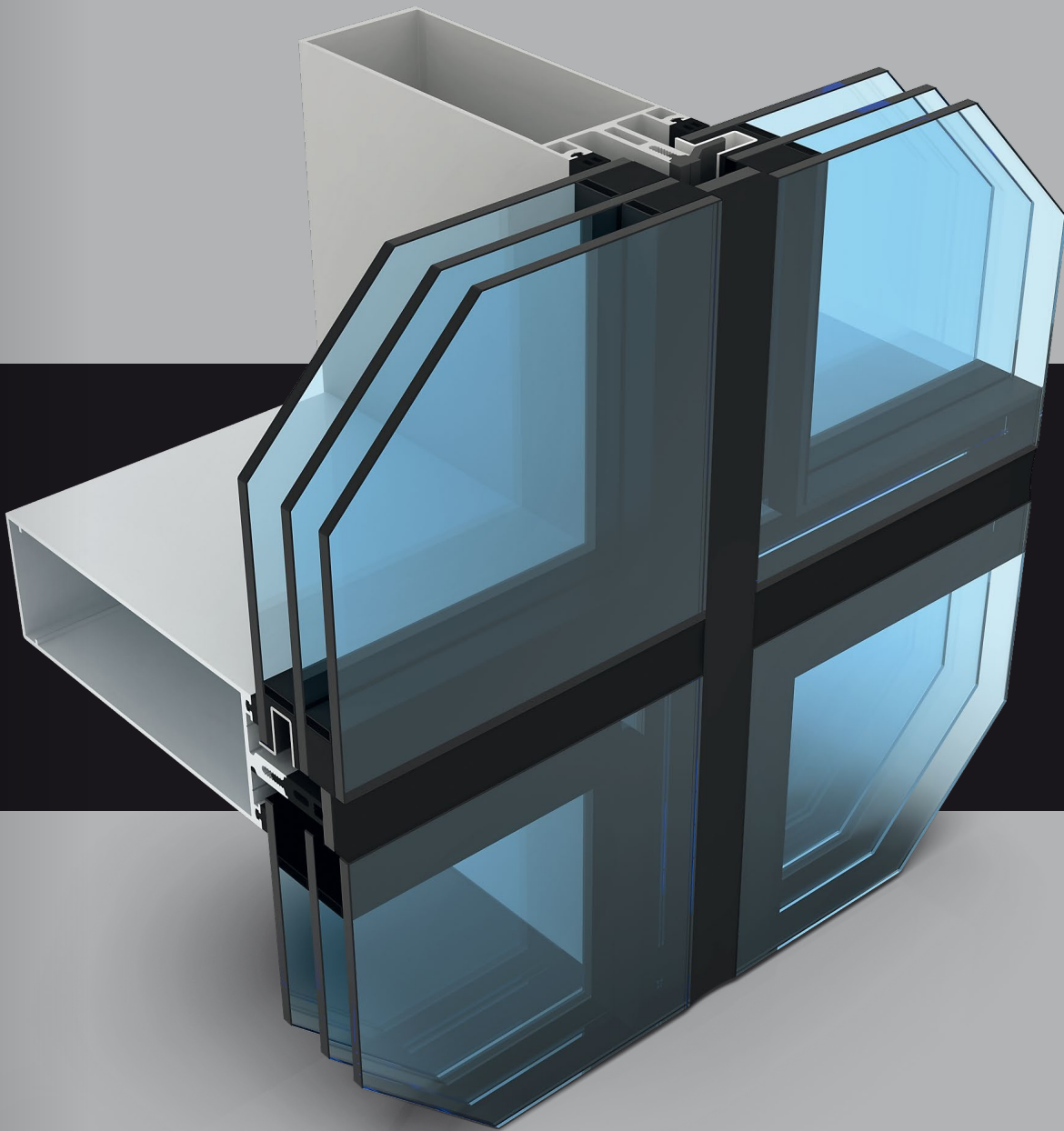


System 17-65 SP

65mm Silicone Pointed Curtain Walling



System 17-65 SP

The 17-65 SP (Silicone Pointed) 65mm curtain walling system is designed for use in high rise or multi-storey applications. Glazing and curtain wall systems need to be designed to work in harmony with the building construction. The consequence of this can be greater structural spans resulting in increased building movement. The silicone pointed curtain walling system has been developed as an extension to our standard System 17-65 High Rise Curtain Walling to offer flush vertical and horizontal joints.

Scope

The 65mm SP curtain walling system is based on the established Metal Technology System 17-65 capped curtain walling and provides greater clearance for the glass units to move within the curtain walling profiles when compared with the System 17 SP 50mm suite.

The system has been designed with a range of structural mullions and transoms from 50mm to 225mm allowing architects and designers a variety of aesthetic solutions. Bespoke profiles can be produced subject to volume and lead times to allow architects to achieve flexible designs.

Materials

Aluminium profiles are extruded from aluminium alloy 6060 T6 complying with the recommendations of BS EN 12020-2 / BS EN 755-Parts 1 to 9.

Finishes

The range of sections can be provided in either of the following ranges of finishes:

1. Anodised to BS 3987 or BS EN ISO 7599.
 2. Powder organic coated to BS EN 12206-1.
- Where required, a different colour / finish can be provided internally and externally.

Construction

Mullions are square cut and jointed using specially designed jointing spigots. Transoms have notched ends to ensure an easily weather-proofed joint can be provided between mullion and transom. The system is mullion drained and provision is made to drain water out of the mullion at regular intervals.

Door Inserts

Details and specifications for doors can be found in the Metal Technology **THERMAL** manuals.

Installation

The Metal Technology High Rise Curtain Wall system is designed as a 'Stick' built system. Therefore, mullions and transoms are transported to site as prepared components and the grid work is assembled onto the building in stick form.

Extruded profiles for manufacturing adjustable structural brackets capable of accommodating site tolerance, thermal and structural movement are available. These allow the curtain walling to be fixed to the structure easily and securely so that all loads are transferred back to the building's main structural form.

Expansion joints are allowed on every floor or every other floor to accommodate any building movement.

Glazing

Specialist glazed units from 32mm to 54mm can be achieved, incorporating recessed inserts set against extruded gaskets internally, which are fitted into gasket grooves in the mullions and transoms and clamped to the framing members using a concealed, toggled fixing detail. Horizontal and vertical joints between adjacent glazed units are then silicone pointed, with a black neutral cure silicone, to give a flush finished façade. Bespoke thermally broken profiles also provide a flush perimeter detail.

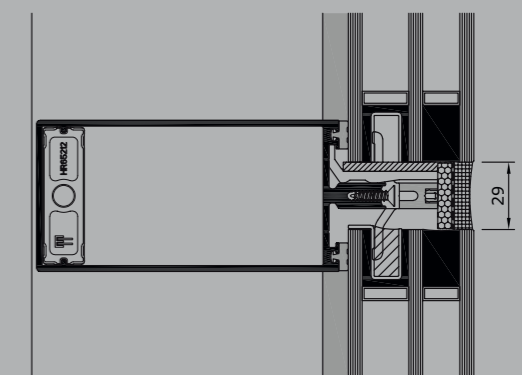
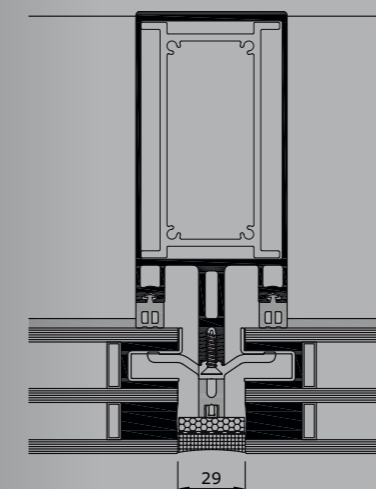


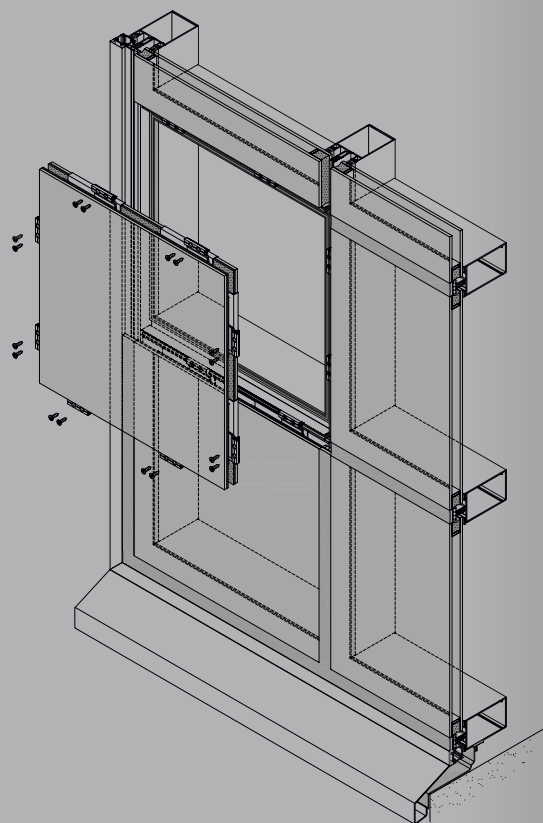
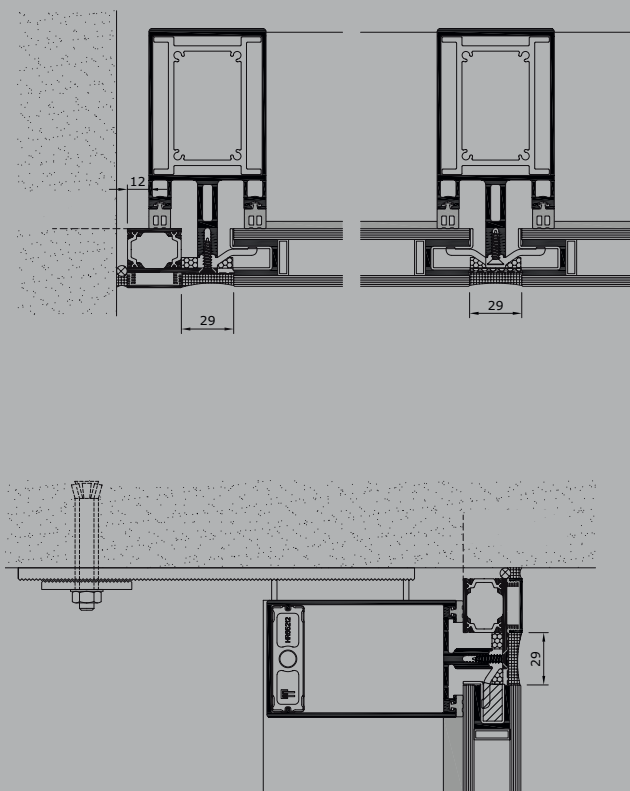
Performance

The curtain walling system is designed as a front sealed system and has been successfully tested to BS EN 13050 for weather, and CWCT hosepipe tested. The system met the requirements of the CWCT dynamic test for curtain walling and achieved the following results:

Air permeability	- 600 Pa
Water tightness	- 600 Pa
Wind resistance	- 2400 Pa
Dynamic water tightness	- 600 Pa
Wind load (safety)	- 3600 Pa

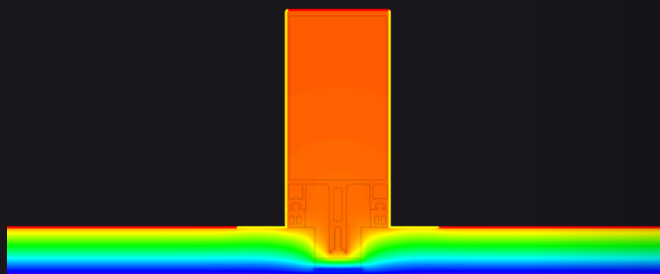
The system has been successfully impact tested in accordance with CWCT section 15, BS EN 13049 and BS EN 14019.





Thermal Performance

System 17-65 SP curtain walling, in conjunction with the correct glass specification, is designed to aid compliance with the latest thermal requirements of the current building regulations.



Metal Technology
 Steeple Rd Industrial Estate
 Steeple Road
 Antrim BT41 1AB
 Northern Ireland
metaltechnology.com

To place an order please call **T+44 (0)28 9448 7777** or email orders@metaltechnology.com

