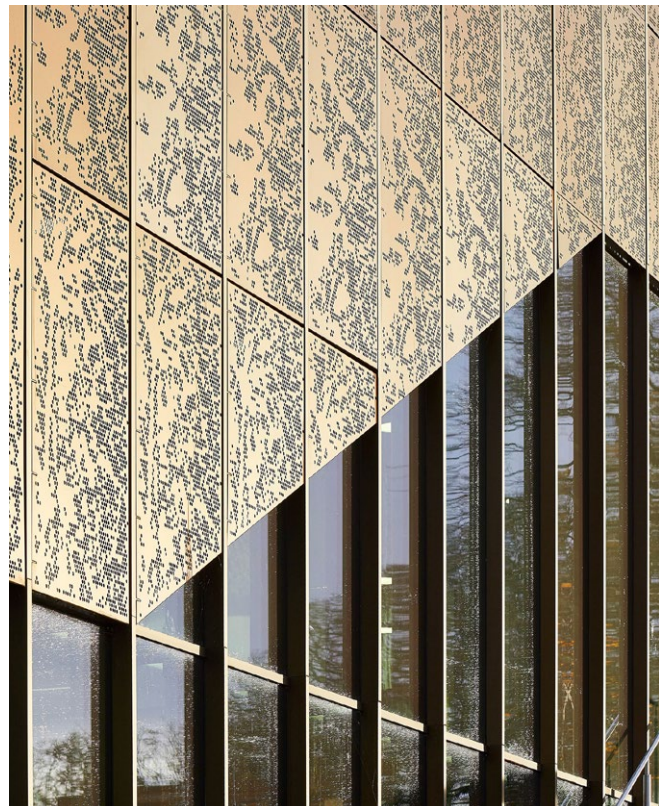


# Health Innovation One Campus

Lancaster, England



**Metal Technology Limited**  
Steeple Rd Industrial Estate | Steeple Road  
Antrim BT41 1AB | Northern Ireland  
T +44 (0)28 9448 777  
sales@metaltechnology.com  
metaltechnology.com

Follow us on  





# Health Innovation One Campus

Lancaster, England

## Metal Technology systems used in landmark £41m Health Innovation Campus at Lancaster University

The landmark Health Innovation One building is an innovation hub offering co-location space for external organisations as well as being the new home for Lancaster University's Medical School and Division of Health Research. The space is designed to encourage collaboration, where external organisations can draw upon the University's expertise to address significant health challenges and improve health and wealth outcomes in the region and beyond.

Architects John McAslan + Partners sought to realise the University's ambition to establish itself as a major international presence in the field of Health and Medicine through the design of this new HIC. JMP's campus masterplan will bring together businesses, the NHS, students and academics from a broad range of disciplinary backgrounds. Central to this campus is the Innovation Hub, representing phase one of the development.

The scheme comprises a café, quiet reading areas, private meeting rooms, open breakout zones and a business lounge for more formal conversations. Close consultation with the University's Faculty of Health and Medicine has resulted in a scheme that offers maximum flexibility, the promotion of interdisciplinary working and collaboration, the provision of exceptional working and learning environments, and a holistic building design that is sustainable and energy efficient, targeting an 'Outstanding' BREEAM standard.

To achieve this performance for the £3M glazing package, fabricator Alucraft working to main contractor BAM Construct, utilised Metal Technology's System 17 Curtain Walling in a bronze anodised finish and from our ranges, System 5-20D Doors and 5-20 windows.

### Client

Lancaster University

### Architect

John McAslan  
+ Partners

### Main Contractor

BAM Construct

### Systems Used

System 17  
Curtain Walling  
System 5-20D Doors  
System 5-20 Windows

### Metal Technology Limited

Steeple Rd Industrial Estate | Steeple Road

Antrim BT41 1AB | Northern Ireland

T +44 (0)28 9448 777

sales@metaltechnology.com

metaltechnology.com

Follow us on

