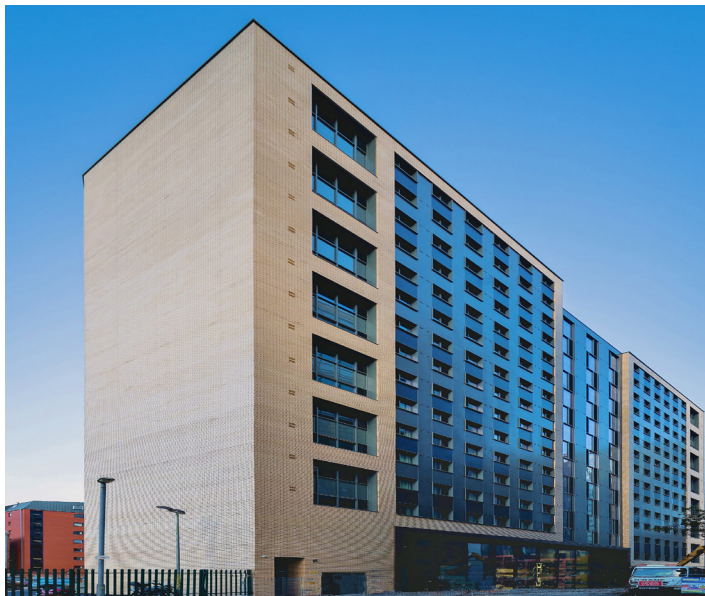


McClintock St

Belfast



Metal Technology Limited

Steeple Road Industrial Estate | Steeple Road | Antrim
Northern Ireland | BT41 1AB | T +44 (0)28 9448 7777
sales@metaltechnology.com | metaltechnology.com



Elms BT2: A shining example of student accommodation from Metal Technology

QUB's Elms BT2 student accommodation on McClintock Street, Belfast is a shining example of positive urban regeneration to create much needed student accommodation that blends seamlessly with surrounding amenities. The project showcases a striking collection of multi-functional systems from architectural aluminium systems' company, Metal Technology.

The £21,000,000 student residential development spans an imposing 16 floors and sits alongside the adjacent Maldron Hotel Belfast. Made up of 476 bedrooms, it also includes an entrance foyer, retail unit and car park; together creating the perfect environment for the diverse student population to thrive.

Featuring Metal Technology's System 17 capped curtain walling with a combination of System 5-35HI+ turn only windows, System 4-35HI+ thermally enhanced Casement windows, System 10 Commercial Doors and System 5-20D Hi+ thermally enhanced door systems, the development not only provides aesthetic appeal, but also the upmost standards when it comes to strength, safety and thermal insulation. Metal Technology's System 23 louvre also provides natural ventilation, light control and enhanced security for each residential unit.

All Metal Technology systems are designed to perform seamlessly together to deliver the desired aesthetic and performance standards. Used individually or together, they offer complete design flexibility for creative aesthetics with the assurance of value engineered structural, weather and security performance.

Client

Queens University Belfast

Architect

Consarc Design Group

Main Contractor

McAleen & Rushe

Systems Used

System 5-35HI+ turn only windows

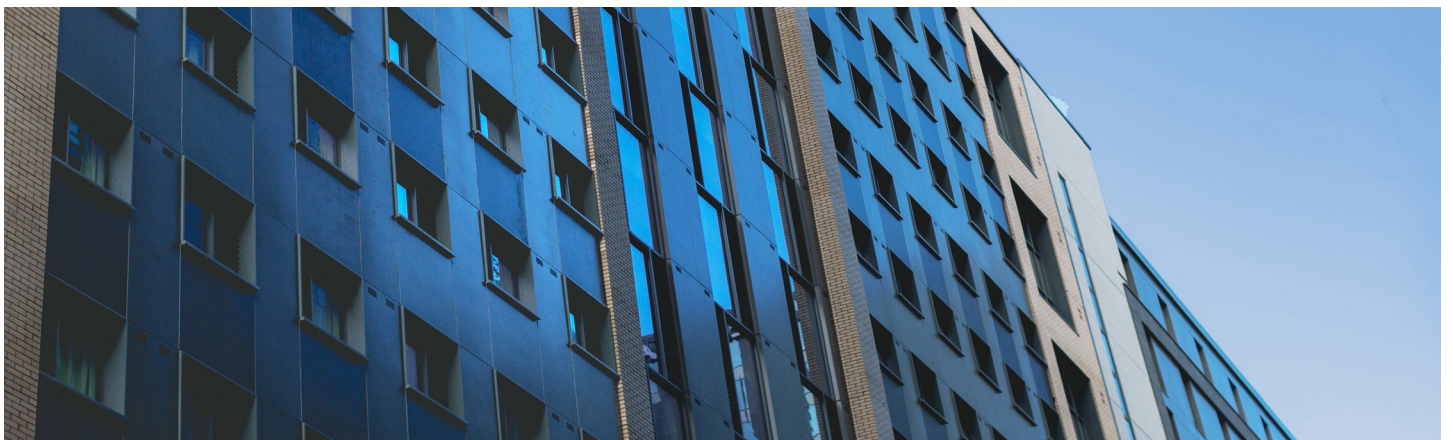
System 23 louvres

System 4-35HI+ casement windows

System 17 high rise capped curtain walling

System 5-20D thermal doors

System 10 commercial doors



Metal Technology Limited

Steeple Road Industrial Estate | Steeple Road | Antrim
Northern Ireland | BT41 1AB | T +44 (0)28 9448 7777
sales@metaltechnology.com | metaltechnology.com

