

College Avenue (QUB)

Belfast



Metal Technology Limited

Steeple Road Industrial Estate | Steeple Road | Antrim
Northern Ireland | BT41 1AB | T +44 (0)28 9448 7777
sales@metaltechnology.com | metaltechnology.com



College Avenue: Setting the standard for Student Accommodation

Queens University Belfast's (QUB) brand-new student accommodation at College Avenue, beautifully brings together a suite of multi-functional systems from architectural aluminium systems' company, Metal Technology.

With an overall project value of £35,000,000, the state-of-the-art student accommodation brings together effective space optimisation and practical design to create a safe space for students in a central Belfast location with a range of purpose-built areas to facilitate a balanced approach to study, health and wellbeing.

Spanning 11 floors and an impressive 240,000ft² the accommodation features Metal Technology's System 17 high rise curtain walling on all facades in combination with System 5- 35Hi+ turn only windows, System 23 louvres and System 5-20D Hi+ doors . These purpose designed louvres have been tested to BS6180 for guarding providing a safe environment even when the full height windows are fully opened. Key considerations when choosing these products included practicality, safety, acoustics and thermal performance throughout the building.

Internally, the building features 747 student accommodation units, a gymnasium, study spaces, refreshment and recreational areas as well as dedicated IT suits.

All Metal Technology systems are designed to perform seamlessly together to deliver the desired aesthetic and performance standards. Used individually or together, they offer complete design flexibility for creative aesthetics with the assurance of value engineered structural, weather and security performance.

Client

Queens University Belfast

Architect

Consarc Design Group

Main Contractor

McAleer and Rushe

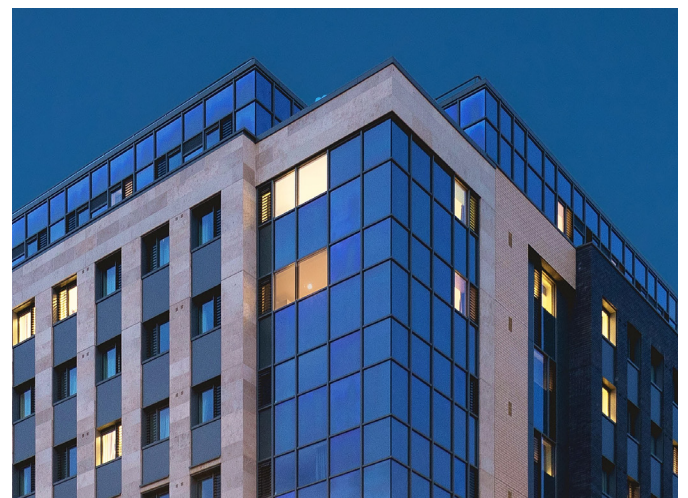
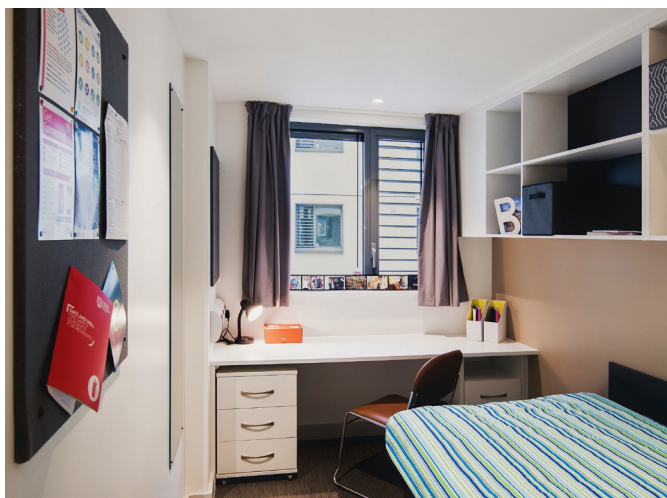
Systems Used

System 5-35 turn only windows

System 23 louvres

System 17 high rise capped curtain walling

System 5-20D thermal doorcontrol doors



Metal Technology Limited

Steeple Road Industrial Estate | Steeple Road | Antrim
Northern Ireland | BT41 1AB | T +44 (0)28 9448 7777
sales@metaltechnology.com | metaltechnology.com

