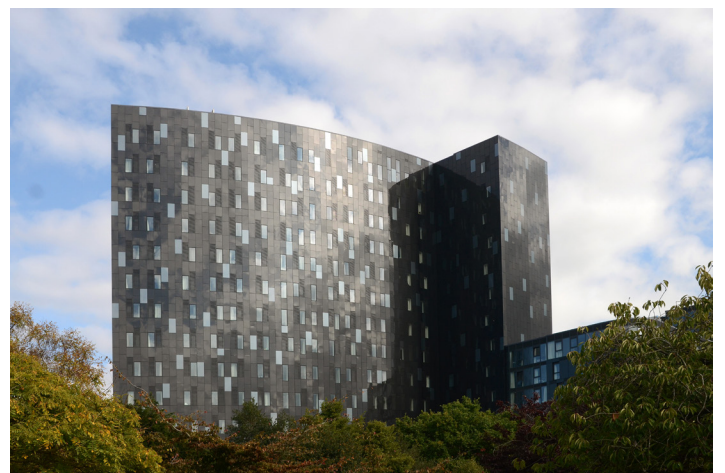


# Catherine House

Portsmouth England



**Metal Technology Limited**  
Steeple Road Industrial Estate | Steeple Road | Antrim  
Northern Ireland | BT41 1AB | T +44 (0)28 9448 7777  
sales@metaltechnology.com | metaltechnology.com



# Catherine brings housing to Portsmouth students

Leading aluminium systems manufacturer, Metal Technology, supplied a full suite of façade, window and door solutions for Catherine House in Portsmouth, which provides high-specification housing for 1000 students.

The two-year McAleer & Rushe design and build project completely transformed the existing Zurich House on Stanhope Road, with a complete refurbishment and the construction of an adjoining building. In addition to student rooms in a variety of clusters, Catherine House contains a reception, common room, cycle storage, car park, sky lounge and shops.

The project features Metal Technology System 17 curtain walling in both capped and silicone pointed variants with System 5-35Hi+ windows complemented by System 5-20D Hi+ doors externally, with System 10 doors specified for internal use.

Metal Technology systems are designed to perform seamlessly together to achieve the desired look and performance standards. Used individually or together, they offer complete design flexibility for creative aesthetics with the assurance of superior performance, structurally, thermally, acoustically and in terms of safety and security.

**Client**  
GSA

**D&B Contractor**  
McAleer & Rushe

**Architect**  
Urban Innovations

---

## Systems Used

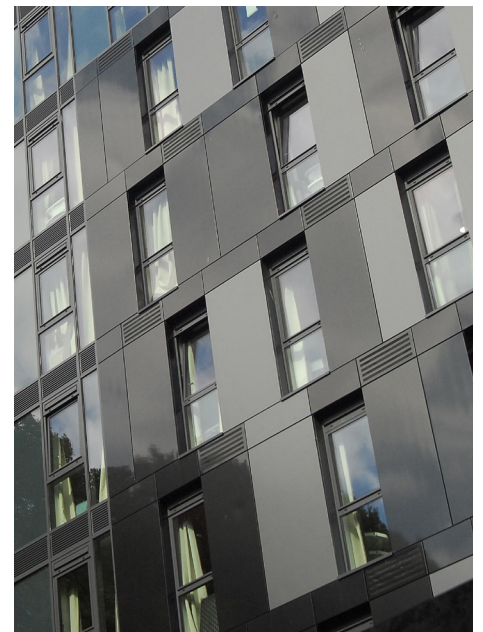
System 17 capped curtain walling

System 17 silicone pointed curtain walling

System 5-35Hi+ doors

System 5-20D doors

System 10 doors



**Metal Technology Limited**  
Steeple Road Industrial Estate | Steeple Road | Antrim  
Northern Ireland | BT41 1AB | T +44 (0)28 9448 7777  
sales@metaltechnology.com | metaltechnology.com

