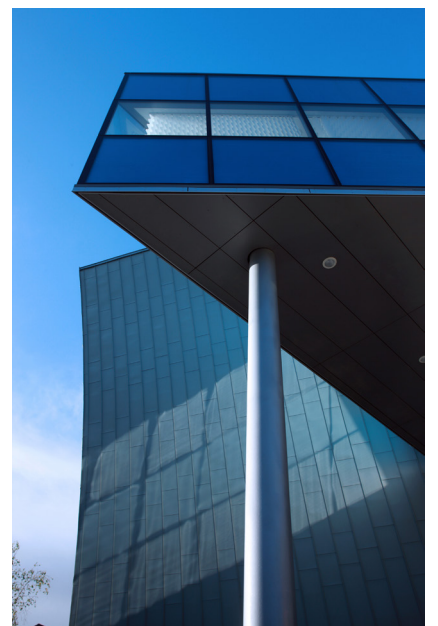


The Space

Bangor, Northern Ireland



Metal Technology Limited
Steeple Road Industrial Estate | Steeple Road | Antrim
Northern Ireland | BT41 1AB | T +44 (0)28 9448 7777
sales@metaltechnology.com | metaltechnology.com



Curved Space from Metal Technology

The Space, the performing art, technology and innovation centre for the South Eastern Regional College (SERC) campus in Bangor, Northern Ireland benefits from an iconic curved façade constructed using Metal Technology architectural aluminium systems.

The new build by OHMG is formed from two blocks connected by a glass atrium. The building features System 17 curtain walling in capped and silicone pointed variants, as well as System 5-20 turn-only and System 4-20 casement windows.

System 17 was the ideal choice for The Space building as it offered the designer the design flexibility to create the curved aesthetic together with high performance thermal efficiency and weathering. Window systems from Metal Technology all deliver exceptional performance, thermal and security and blended seamlessly into the overall design.

As a performing arts hub, acoustic performance was critical. A 300mm gap between interior glazing and the external façade created a noise buffer, enhanced by the installation of acoustic padding on glazed fixing to prevent noise transgression. In addition to achieving the acoustic specification, the building was given a Very Good BREEAM rating.

Contractor

O'Hare & McGovern
(OHMG)

Architect

Hamilton Architects

Systems Used

System 17 High rise curtain walling, capped

System 17 High rise curtain walling, silicone pointed

System 5-20D turn only window

System 4-20 casement windows



Metal Technology Limited

Steeple Road Industrial Estate | Steeple Road | Antrim
Northern Ireland | BT41 1AB | T +44 (0)28 9448 7777
sales@metaltechnology.com | metaltechnology.com

