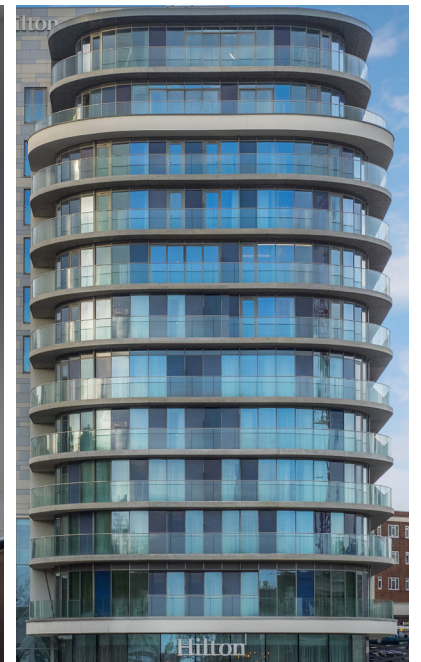


Hilton Bournemouth

Bournemouth



Metal Technology Limited
Steeple Road Industrial Estate | Steeple Road | Antrim
Northern Ireland | BT41 1AB | T +44 (0)28 9448 7777
sales@metaltechnology.com | metaltechnology.com



High Rise Perfection from Metal Technology at Hilton Bournemouth

Hilton Bournemouth, the latest property in the Hilton Hotels & Resorts brand, has achieved its soaring glass façade with panoramic views to the coast and across the popular seaside town thanks to extensive use of architectural aluminium systems from Metal Technology.

The thirteen-storey landmark scheme was designed by Cube in association with White Ink Architects and constructed by Northern Ireland contactor McAleer & Rushe. The building consists of a 172-bedroom 4-star hotel together with 15 exclusive residential apartments.

The extensive glazed façade with its eye-catching curves is underpinned by Metal Technology's System 17 high rise curtain walling, complemented by a suite of systems from the company's **THERMAL** range: System 4-35 Hi+ casement windows, System 5-20D Hi+ doors and System 25 Hi+ lift-and-slide sliding doors.

Utilised together this suite of systems from Metal Technology gives complete design and aesthetic flexibility without compromise on structural integrity, weather performance and thermal enhancement while offering full compliance to all relevant standards.

Developer
THAT Group

Architect
Cube Design in
association with White Ink
Architects

Contractor
McAleer & Rushe

Systems Used

System 17 high rise
curtain walling

System 5-20D Hi+ doors

System 25 Hi+ lift-and-
slide sliding doors

System 4-35 Hi+
casement windows



Metal Technology Limited
Steeple Road Industrial Estate | Steeple Road | Antrim
Northern Ireland | BT41 1AB | T +44 (0)28 9448 7777
sales@metaltechnology.com | metaltechnology.com

