

# West Village Student Housing

Glasgow



**Metal Technology Limited**

Steeple Road Industrial Estate | Steeple Road | Antrim  
Northern Ireland | BT41 1AB | T +44 (0)28 9448 7777  
sales@metaltechnology.com | metaltechnology.com



# Metal Technology enhances student living at West Village

The West Village residential student scheme on Beith Street in Glasgow is part of a wider masterplan to create a new residential quarter with links to Glasgow Harbour. Developed by Downing and designed by Falconer Chester Hall architects, the 701 apartment complex features en-suite shared and studio accommodation overlooking the River Kelvin.

The building's facing brickwork combines with natural stone on the most prominent corner of the site and is curved to create a landmark. This curved façade is constructed using Metal Technology's System 17 high rise capped curtain walling and the entire building features **THERMAL** range System 4-20Hi+ casement windows.

Complying with the latest British Standards, System 17 provides structural integrity, weather performance, thermal enhancement and complete design versatility. The Metal Technology 4-20Hi+ casement window systems blend seamlessly and offer advantages of polyamide thermal break technology and impressive acoustic performance, achieving a 47db reduction with double glazed glass units. The building achieved full Secure by Design approval.

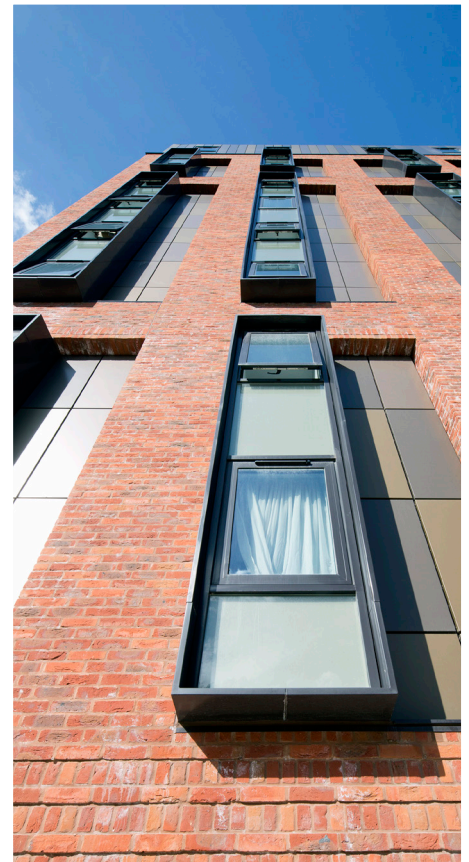
**Developer**  
Downing

**Architect**  
Falconer Chester Hall

## Systems Used

System 17 high rise capped curtain walling

System 4-35 Hi+ casement windows



## Metal Technology Limited

Steeple Road Industrial Estate | Steeple Road | Antrim  
Northern Ireland | BT41 1AB | T +44 (0)28 9448 7777  
sales@metaltechnology.com | metaltechnology.com

