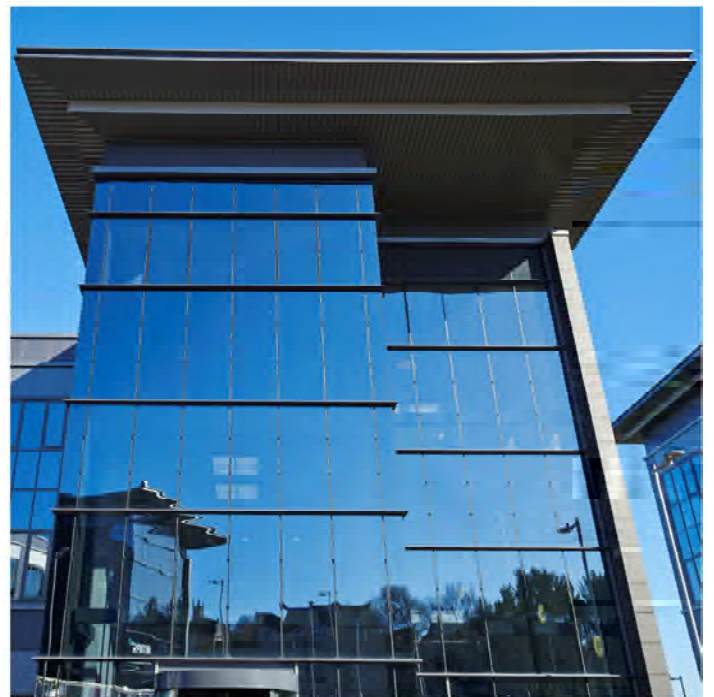
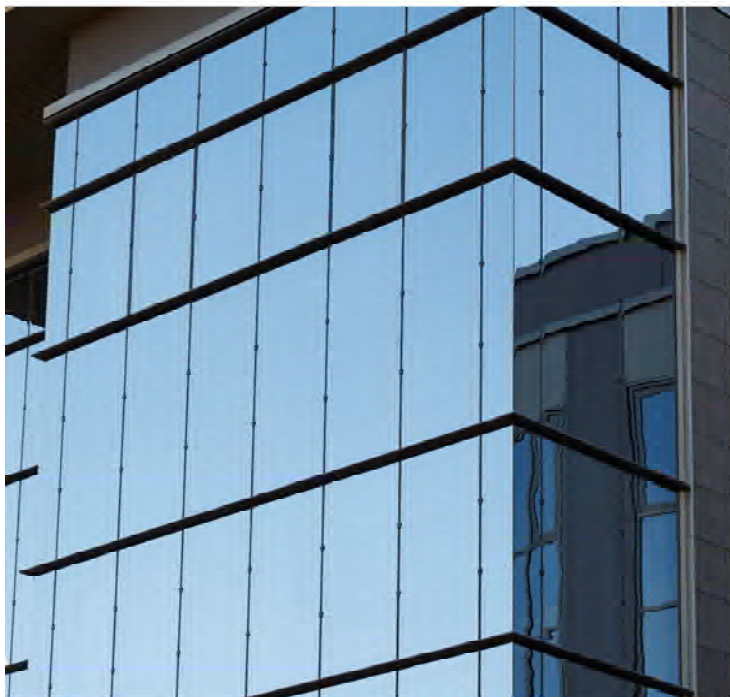


City View

Aberdeen, Scotland



Metal Technology window, door and curtain walling products have been installed at the City View office scheme in Aberdeen. The scheme, whose contemporary design and high specification quality have been recognised by Aberdeen Civic Society, extends over 4 acres in a sought- after commercial district.

Metal Technology's System 4-35 Hi+ Thermally Enhanced Casement Window offers the designer a range of profiles that provide structural integrity, weather performance and security. Installed in conjunction with the correct glass specification, the system complies with the latest thermal requirements of current building regulations. The polyamide thermal break profiles have been specifically designed to minimise heat transfer across the window profiles.

Thermal performance is further improved through the introduction of specially designed thermal gaskets and foam profiles, reducing radiation heat loss across the air cavities within the window profiles.

City View's aesthetic appeal is enhanced by Metal Technology's elegant curtain walling. System 17 Capped and System 17 Latitude are designed for expansive high-rise applications and offer a variety of powder coated finish options, providing a striking visual impact.

The co-ordinated design approach is completed by the use of Metal Technology's System 5-20D Thermally Enhanced door. With both security and sustainability featuring highly in this system the specifier is able to meet the high demands relating to building design and performance.

Developer

Knight Property Group

Contractor

Andrew Cowie Construction

Fabricator

Crest Glazing

Value

£450K

Systems Used

System 4-35Hi+
System 17 Latitude
System 5-20D



Metal Technology Limited

Steeple Road Industrial Estate | Steeple Road | Antrim
Northern Ireland | BT41 1AB | T +44 (0)28 9448 7777
sales@metaltechnology.com | metaltechnology.com

