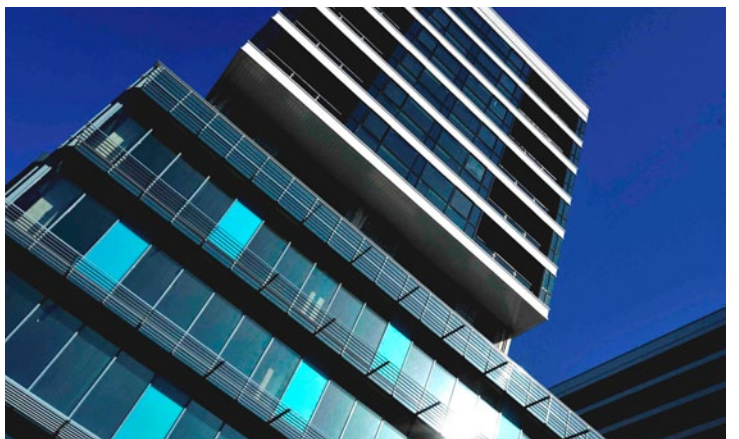


Lanyon Place

Belfast, Northern Ireland



This iconic project in a vibrant Belfast city centre location, occupies a prime position with superb accessibility to restaurants, cultural venues and prestige shopping at the nearby Victoria Square.

This mixed use development features 11,600m² of retail and office accommodation and 102 luxury apartments. The two residential blocks rise up 7 storeys above a Podium below which are two storeys of 150 car-parking spaces. The Podium incorporates one level of lower ground floor retail and restaurant space and 5 storeys of prime office accommodation with central atrium. The building is a concrete frame structure with substantial specialist glazed curtain walling to the external envelope.

The office section of the building has a combination of specialist planar glazing and Metal Technology's System 17 Curtain Walling incorporating decorative frit and coloured ceramic glazing with Brise-Soleil and bespoke vertical fin solar shading features, feature glazed atrium roof with 'bow-string' truss arrangement and sustainable 'green' roof construction.

With the residential towers utilising Metal Technology's System 17 SP (silicone pointed) Curtain Walling with frameless vents and tilt and slide doors onto the balconies, the complete structure comes together to make an impressive statement.

Architect

Broadway Malayan

Contractor

Henry Bros.

Fabricator

Windell

Value

£3.2M

Systems Used

System 17 High Rise

System 5-20D

System 17 SP Silicone Pointed



Metal Technology Limited

Steeple Road Industrial Estate | Steeple Road | Antrim
Northern Ireland | BT41 1AB | T +44 (0)28 9448 7777
sales@metaltechnology.com | metaltechnology.com

