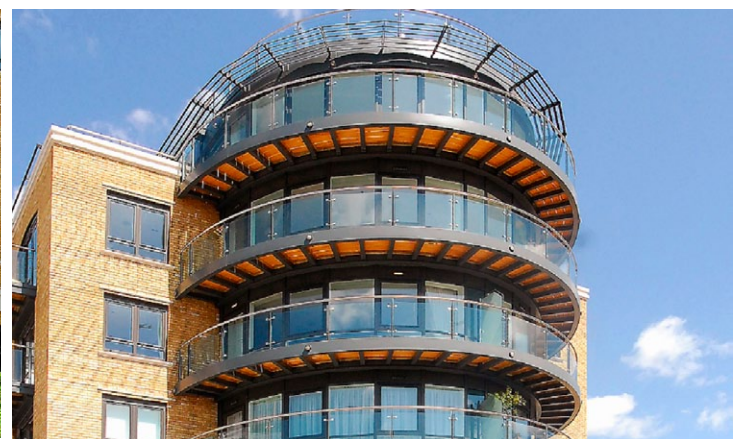


# Kew Bridge

London



# The flexibility of System 17 Curtain Walling for architects.

One of London's most desirable residential areas, the area around Kew bridge became the focus of fashionable West London in the late 18th century and its Royal connections were confirmed when the current bridge was opened by King Edward VII in 1903.

Constructed by Ardmore on an historic site overlooking the Grade II listed bridge, the completed development at Kew will provide 121 stunning new waterside homes laid out over two 7-storey residential blocks. The first block provides 61 high quality two and three bedroom apartments above commercial premises and associated services on the ground floor.

Offering unlimited flexibility to architects, System 17 Curtain Walling provides a wide range of structural mullions, transoms and feature caps, meeting the aesthetic and performance requirements of any building. System 5-20D thermally broken doors and thermally enhanced 5-20 Tilt and Turn windows were fitted at the Kew Bridge scheme as standalone items and also as integrated units within the Curtain Walling screens.

Finishes can vary internally and externally, adding to the design possibilities, while the intrinsic qualities of aluminium – infinite recyclability, durability, strength and lightness mean it is one of the most sustainable building materials in use today.

## Architect

Broadway Malyan

## Contractor

Ardmore Construction Ltd

## Fabricator

Fleetwood Architectural  
Aluminium Ltd

## Systems Used

System 17 High Rise  
System 5-20D



### Metal Technology Limited

Steeple Road Industrial Estate | Steeple Road | Antrim  
Northern Ireland | BT41 1AB | T +44 (0)28 9448 7777  
sales@metaltechnology.com | metaltechnology.com

