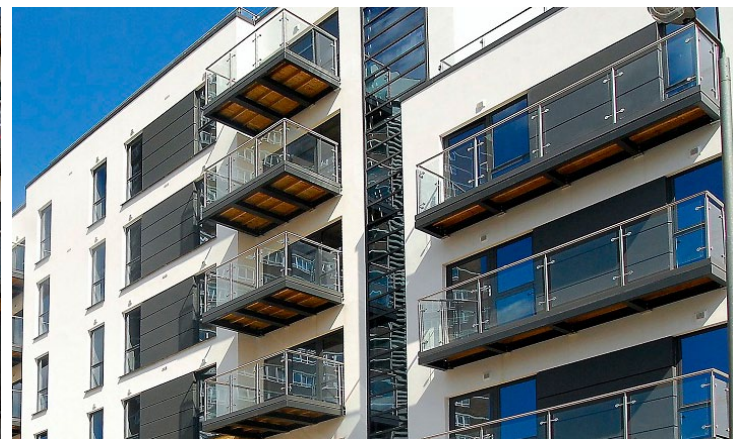


Gwynne Road

Battersea, London



Thermally efficient system used for residential dwellings.

Designed by architects Langley Hall and built by Galliford Try, the quarter-hectare brownfield site was previously occupied by a warehouse and has been redeveloped into a five-storey, 100 residential unit block together with 14,000 square feet of office space.

The large windows and contemporary façade take advantage of all the design values inherent in Metal Technology's System 5-20 Hi + Tilt Turn windows and 5-20D Hi+ doors. System 17 Curtain Walling has been deployed on the façade with System 9/10 entrance doors completing the installation.

The 5-20 Hi+ Tilt Turn window and 5-20D Hi+ door suites are part of Metal Technology's new range which offers a high performance thermally efficient system. A variety of structural mullions, vents and outer frames provides flexible solutions to meet the thermal, structural and aesthetic requirements of any building. All systems are security tested, with the 5-20D doors having standard, panic and electric release options approved.

Finishes vary internally and externally, adding to the design possibilities, while the intrinsic qualities of aluminium – infinite recyclability, durability, strength and lightness mean it is one of the most sustainable building materials in use today, reflecting Linden Homes' stated commitment to producing highly efficient dwellings.

Architect

Langley Hall Associates Ltd

Contractor

Galliford Try Construction

Fabricator

Littleman Contracts Limited

Systems Used

System 5-20 Hi+
System 5-20D Hi+
System 17 High Rise
System 9
System 10



Metal Technology Limited

Steeple Road Industrial Estate | Steeple Road | Antrim
Northern Ireland | BT41 1AB | T +44 (0)28 9448 7777
sales@metaltechnology.com | metaltechnology.com

