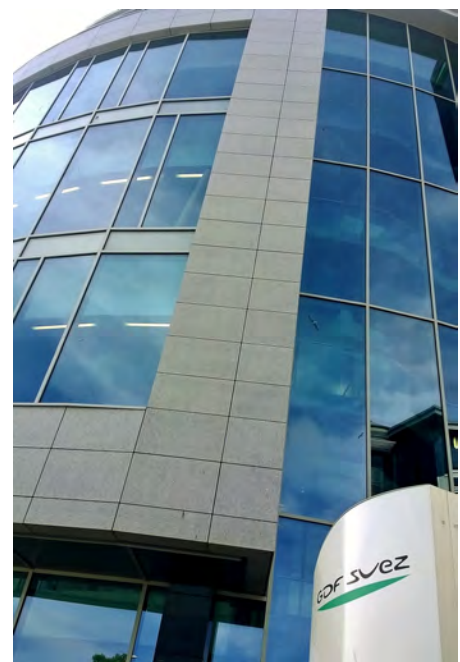


New Victoria Hospital

Glasgow

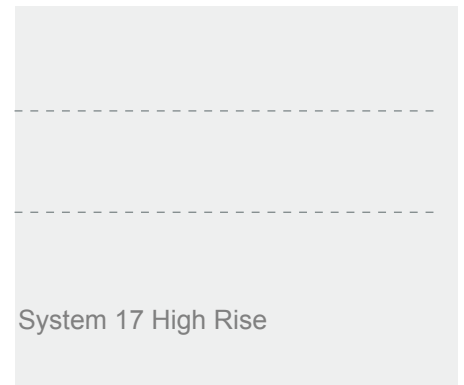


Delivering BREEAM excellence in Aberdeen. Work has completed on a 40 000 sq ft Grade A office building in Aberdeen, one of the first in the city to achieve a BREEAM excellent rating.

Designed by architects Halliday Fraser Munro and built by contractor Mansell, the new 40,000 sq ft bespoke Grade A office building at North Esplanade West, Aberdeen for North Sea operating company, GDF SUEZ E&P UK Ltd is one of the first in Aberdeen to achieve a BREEAM Excellent rating. The five storey, office accommodation offers capacity for up to 200 people providing the company with the required space to grow operations in support of its exploration and production projects.

The building's contemporary exterior is enhanced by Metal Technology's System 17 Capped Curtain Walling. Used to construct visually impressive all glass façades with feature caps, the system offers the designer a wide and diverse range of profiles that provide structural integrity, weather performance and thermal enhancement. The system delivers a project u-value maximum of 1.3W/m²K.

Metal Technology System 5-20D Hi+ doors were installed to complement the curtain walling façade, delivering the ultimate in high performance cost-effective entrance door solutions. In addition to its enhanced thermal properties, the system complies with both BS 6375 and PAS 24 security testing not only covering standard but also panic and electric release door options.



Metal Technology Limited

Steeple Road Industrial Estate | Steeple Road | Antrim
Northern Ireland | BT41 1AB | T +44 (0)28 9448 7777
sales@metaltechnology.com | metaltechnology.com

